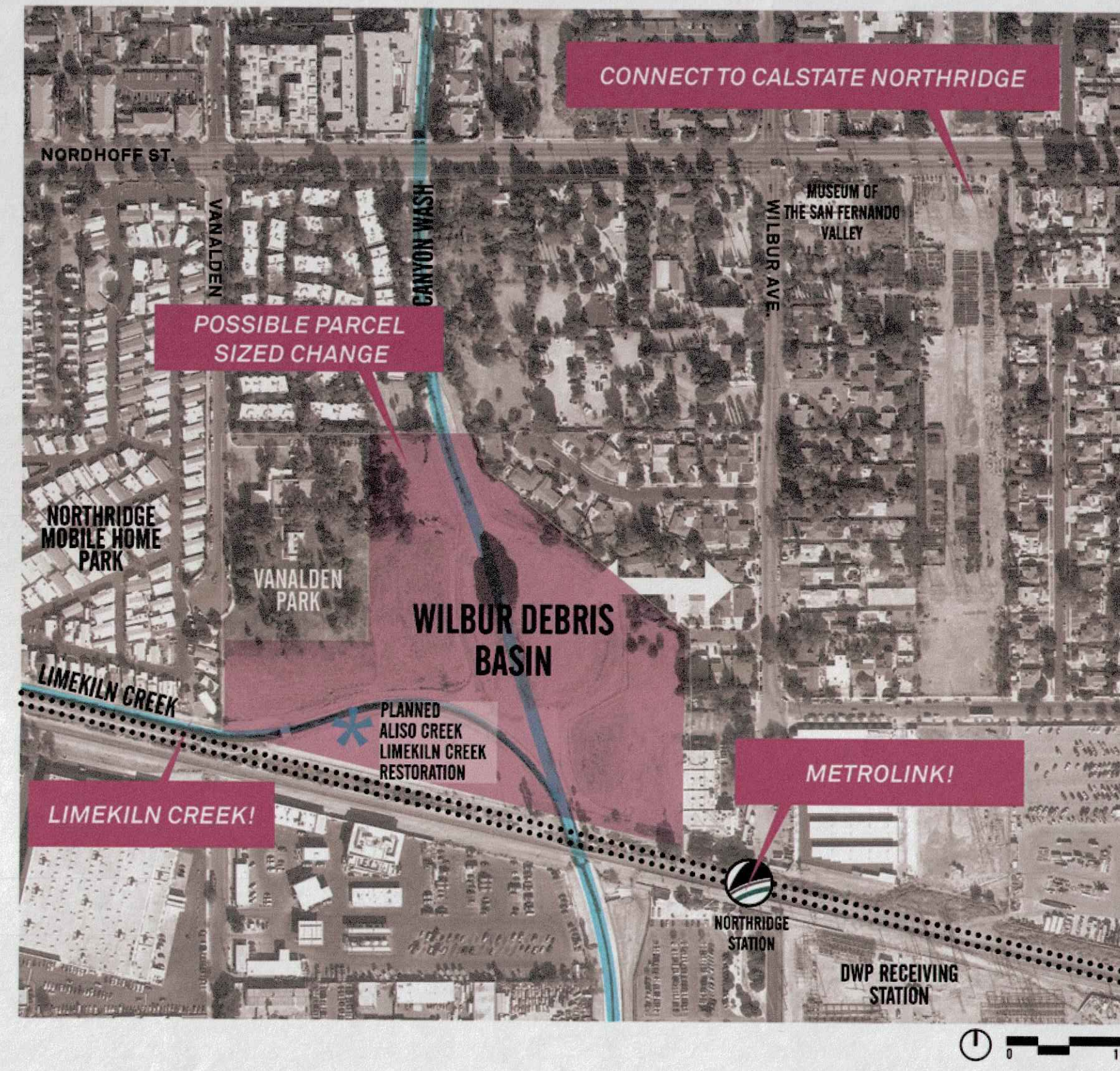


STORMWATER BASIN ALISO CANYON WASH

- SIZE.** 12.9 acres
- CURRENT USE**
+ Detention basin for flood management
- UNIQUE ATTRIBUTES**
+ Just north of the confluence of Limekiln and Aliso Canyon Wash
+ Surrounding neighborhood scores 78% on CES 3.0
+ LA County is already planning work in the area
- MENTIONED DURING**
+ Water and Environment December Committee Meeting
+ Working Group January Meeting



STUDIO-MLA

CHANNEL RIGHT-OF-WAY BURBANK WESTERN CHANNEL

- SIZE**
+ Approximately 20' Wide, Both Sides of Channel
+ Runs Along Majority of Tributary
- CURRENT USE**
+ Maintenance path for flood control channel
- MENTIONED DURING**
+ Water and Environment December Committee Meeting
+ People and Recreation December Committee Meeting

STUDIO-MLA



NOTES

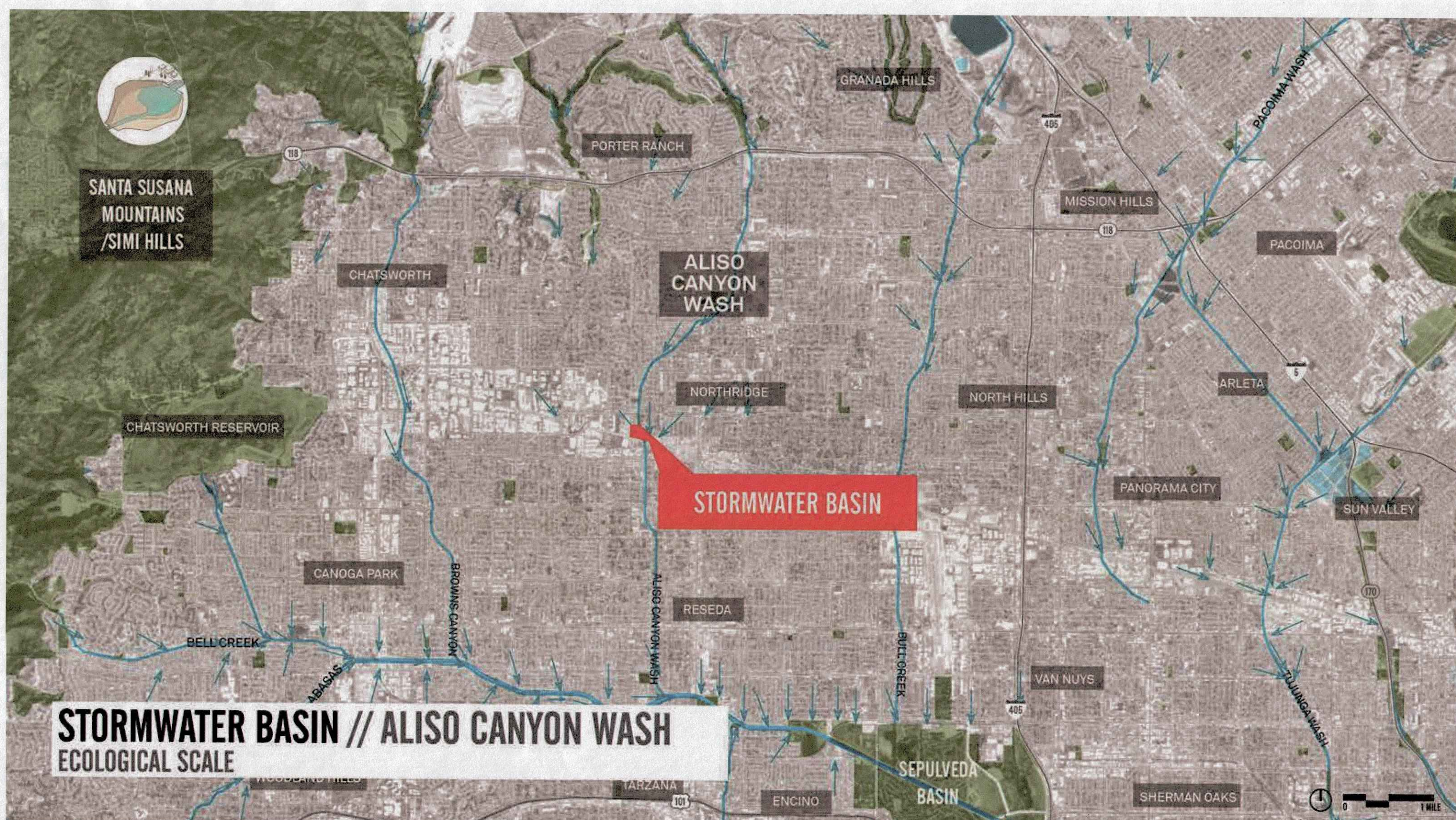
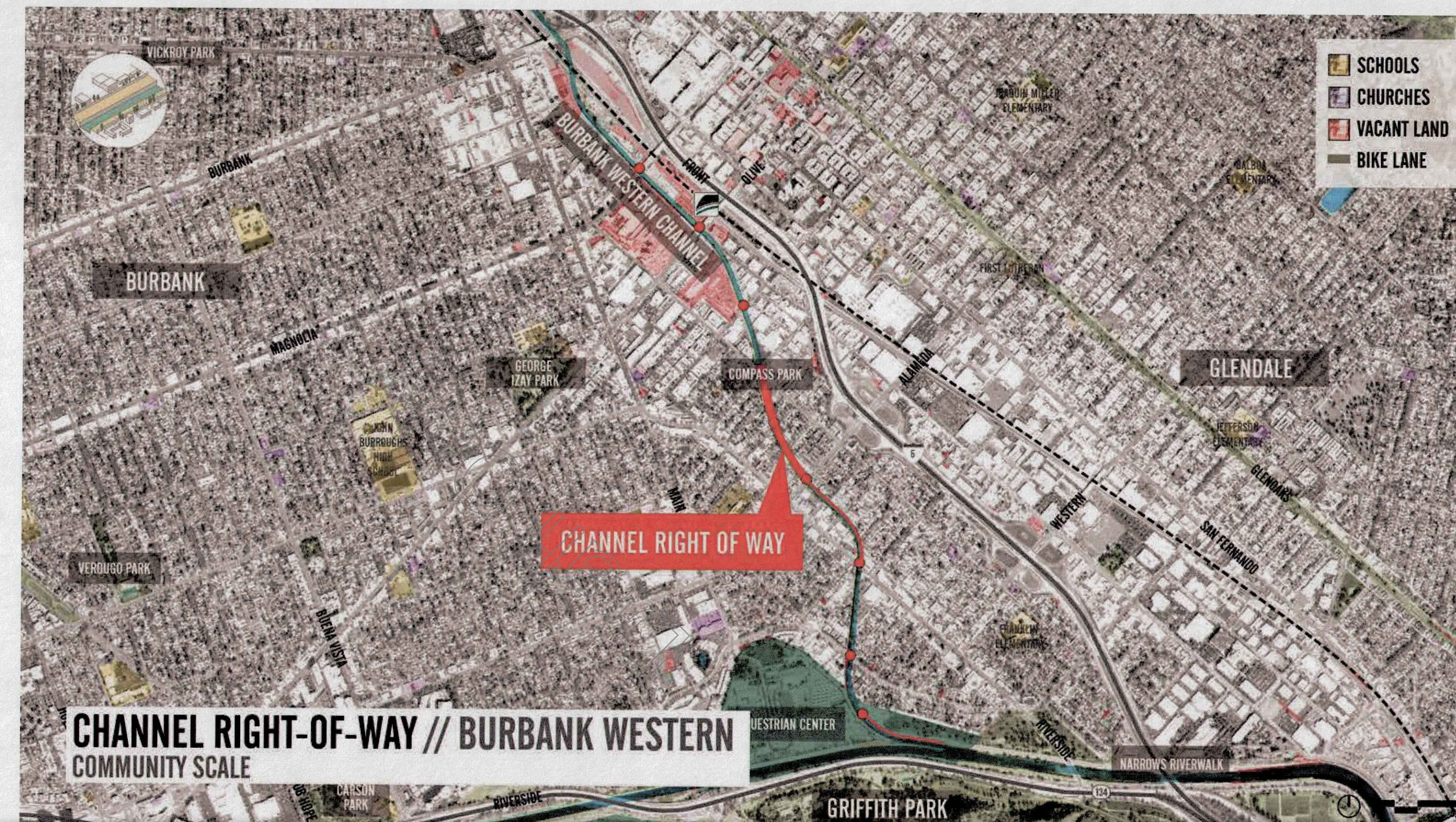
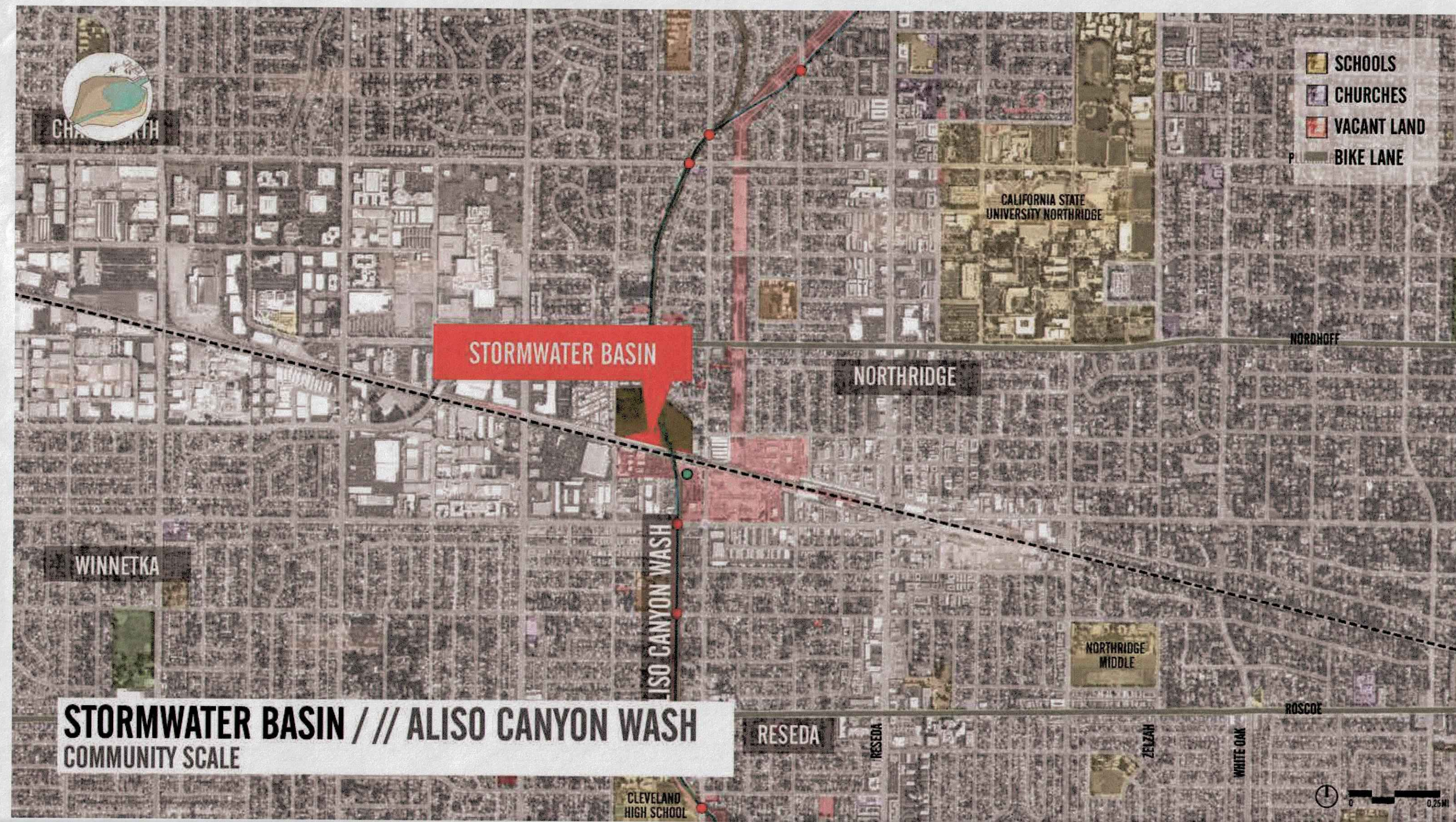
Basins

- + Site-scale green infrastructure (biowales, etc.)
- + Recreational enhancement
- + Ecological restor. and off-channel streams
- + Re-evaluate need for debris mgmt. and flood mgmt.
- + Trails and connectivity
- + Park features
- + Native plant veg.

+ Economic opportunities

Channel Right-of-way

- + Multi-use paths/trails (addresses climate change!)
- + Maintenance and policing/enforcement
- + Separate paths for safety; walk-bike areas
- + Signage, Access Control, Alarms
- + Low-flow streams/diversions
- + off-channel bioswales
- + Remove concrete, naturalize
- + Expansion, Alteration, Floodplain
- + Holistic/ecologically-Buy-Back oriented analysis
- + Connections to other trails/paths/spaces
- + New access to schools
- + Landscaping
- + Community-specific Recreation opp's (horse path, bike, exercise equip., etc.)
- + Bridges, Safe crossings @ cross-streets



OPPORTUNITY SITE TYPOLOGIES

= W&E

= B&B