

**EXISTING PARK**  
ARROYO SECO

**CURRENT USE**  
+ Public Open Space & Recreation Facilities

**ADJACENCIES**  
+ Single Family Residential

**MENTIONED DURING**  
+ Water and Environment December Committee Meeting  
+ Working Group January Meeting



STUDIO-MLA

**SCHOOL**  
PACOIMA WASH

**SIZE** 34 acres

**CURRENT USE**  
+ High School

**MENTIONED DURING**  
+ People and Recreation December Committee Meeting  
+ Water and Environment December Committee Meeting  
+ Water and Environment Public Comment December Committee Meeting  
+ Working Group January Meeting

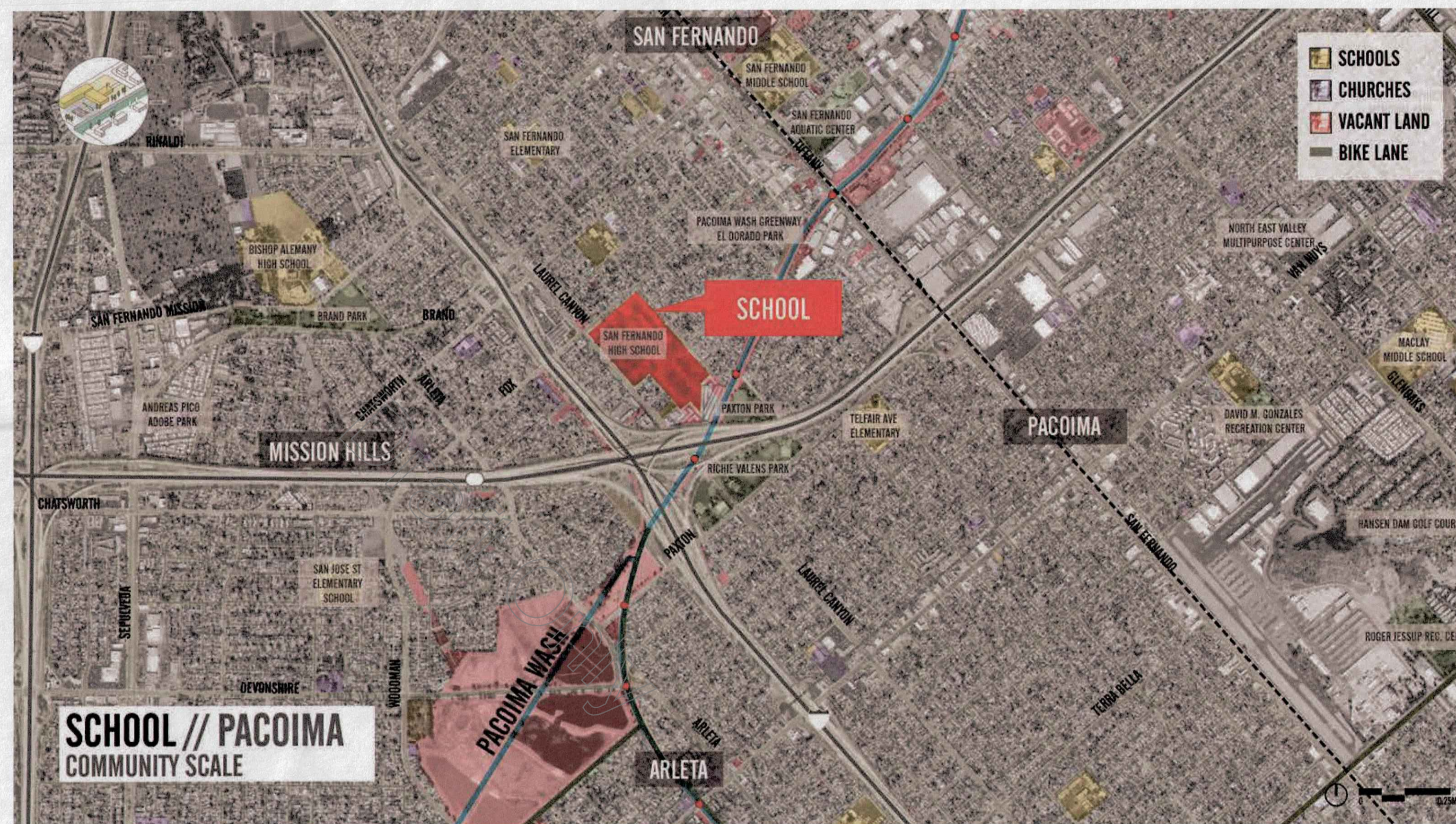


STUDIO-MLA

NOTES

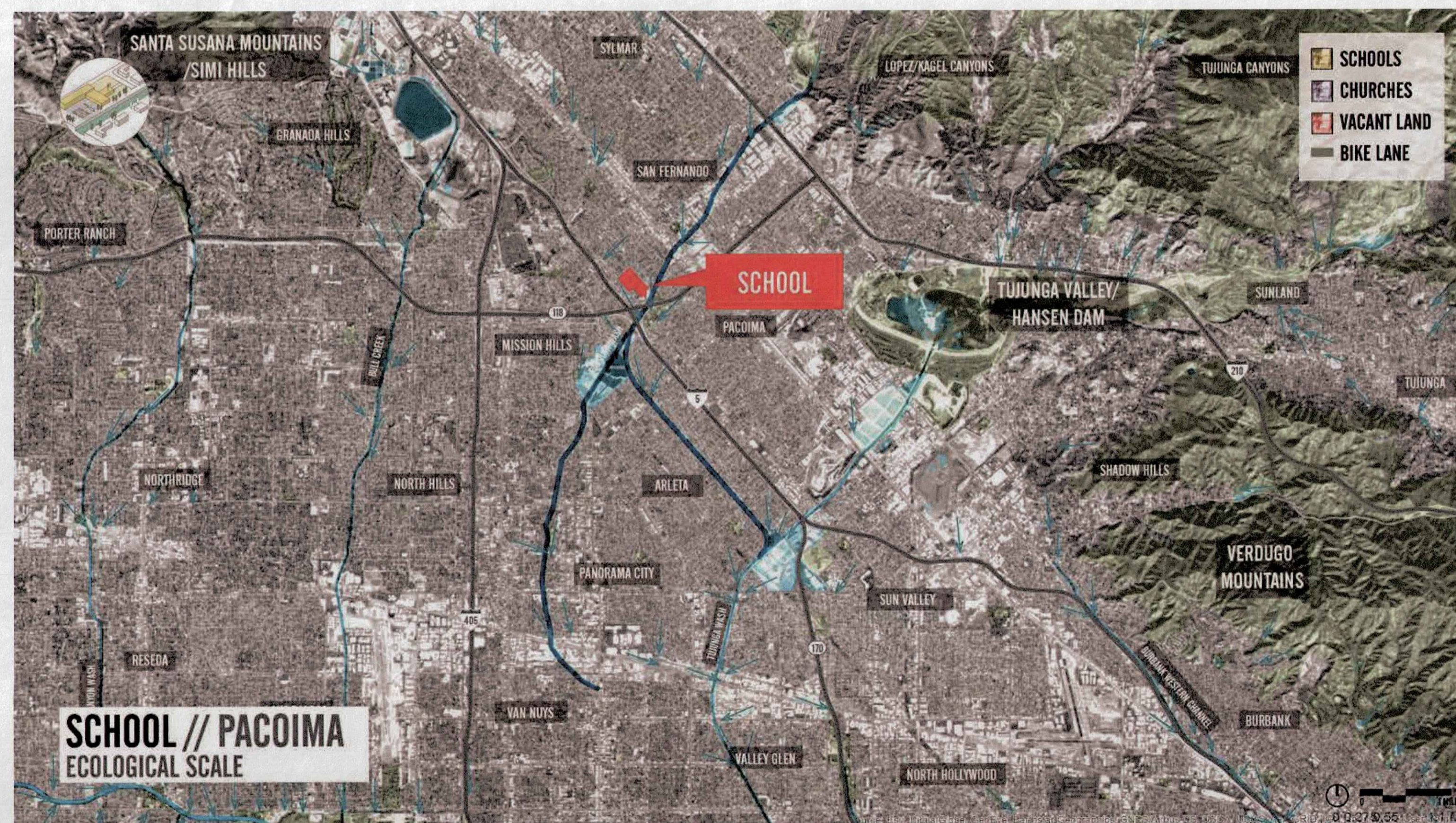
Existing Park

- + Channel expansion and braiding, low-flow streams, naturalization
- + Interpretation, education
- + Ponds fed by low-flows
- + Connections w/ equestrian, bike, ped, multi-use, regional trails
- + Connecting to transit
- + Trail heads
- + Vendor spaces



Schools      Bridges

- + Connectivity / overcoming barriers
- + Ecological curriculum, outdoor classrooms, stewardship programs
- + Green streets
- + Formalized walkways
- + Wayfinding
- + (Storm)water capture
- + <sup>Junior</sup> Citizen scientists
- + Street-ends
- + Joint-use
- + Community gardens (accessible to community during off-hours)
- + trailheads



# OPPORTUNITY SITE TYPOLOGIES

EXISTING PARK, SCHOOL

