

ALISO CANYON WASH

Aliso Canyon Wash begins as an engineered channel exiting the Aliso Debris Basin just California State Route 118 in Granada Hills, and flows through Northridge to its confluence with the Los Angeles River in Reseda. The wash is concrete-lined with vertical walls throughout its 6.4-mile length. Equestrian Community along portions of tributary length use portions of the unpaved path.

POPULATION WITHIN 0.5 MILES¹

- Density: 19 people/acre (LA County Avg: 13)
- Household Income: \$58K (LA County Avg: \$54K)

PARK SPACE + COMMUNITY HEALTH²

- Park Provision: 1.91 acres per 1,000 people (LA County Avg: 3.3 acres per 1,000 people)
- Mixture of local parks, and regional open spaces

PREVIOUS PLANNING EFFORTS

- The Los Angeles River Revitalization Master Plan (City of LA) will include the development of the confluence of Aliso Canyon Creek and the Los Angeles River (Aliso Creek Confluence Park) as a proposed project.
- This area will provide opportunities for habitat restoration, greenways and bike trails as well as water quality treatment via restored wetlands

12/10/2018 COMMITTEE MEETINGS COMMENTS

COMMENT SOURCE

- People and Recreation (Committee)
- People and Recreation (Public)
- Water and Environment (Committee)
- Water and Environment (Public)

PUBLIC LANDS

- Park & Open Space
- Schools
- Other Publicly Owned Lands
- Waterway
- Waterway 1/2 Mile Buffer
- City Boundary

ACCESSIBILITY

- Tributary Bike & Pedestrian Path
- Pedestrian Bridge Over Tributary
- Bike Lane
- METRO Bus Route

PROJECTS PUBLIC LANDS

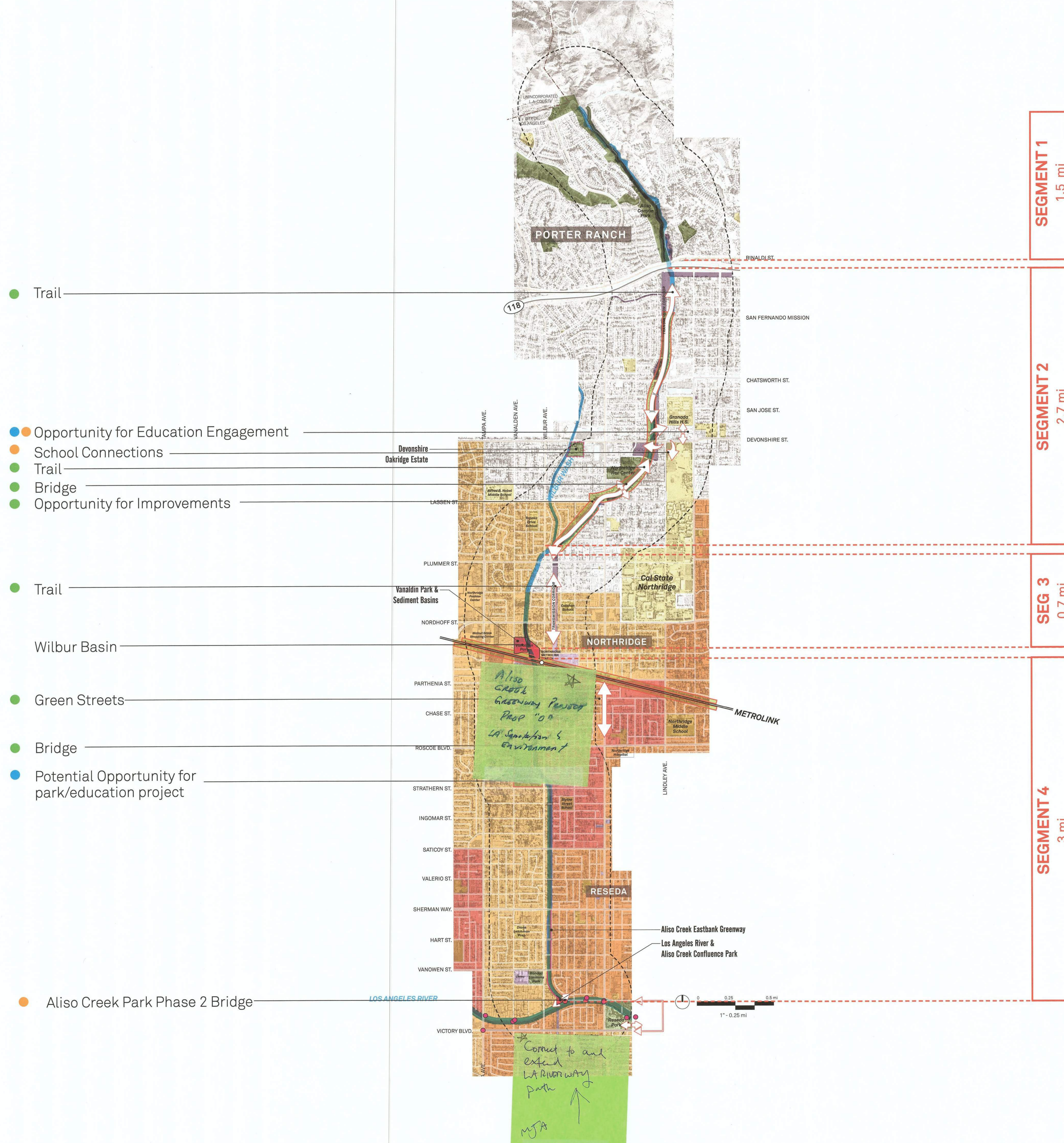
- Complete LADWP Projects
- LA River Revitalization Proposed Projects

DISADVANTAGED COMMUNITIES³ CAL ENVIROSCREEN⁴

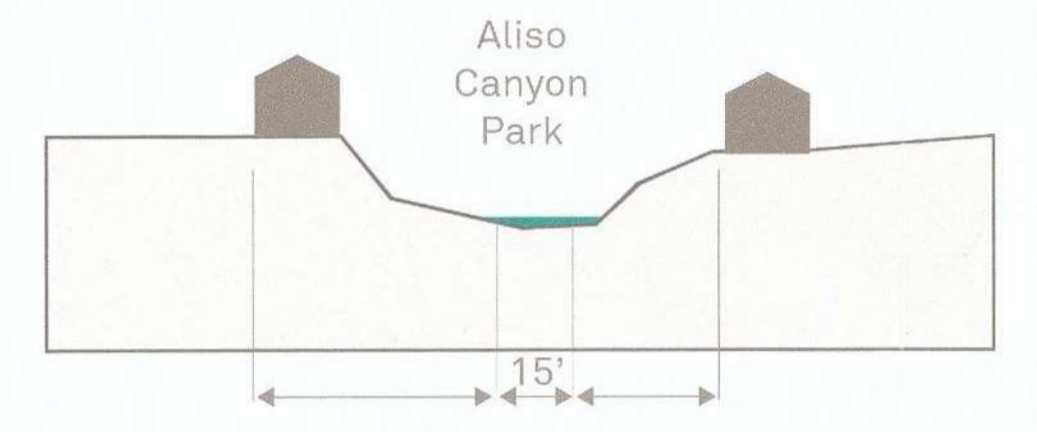
- 91-100% (Highest Scores)
- 81-90%
- 71-80%
- 61-70%

BLACK text denotes OPPORTUNITIES

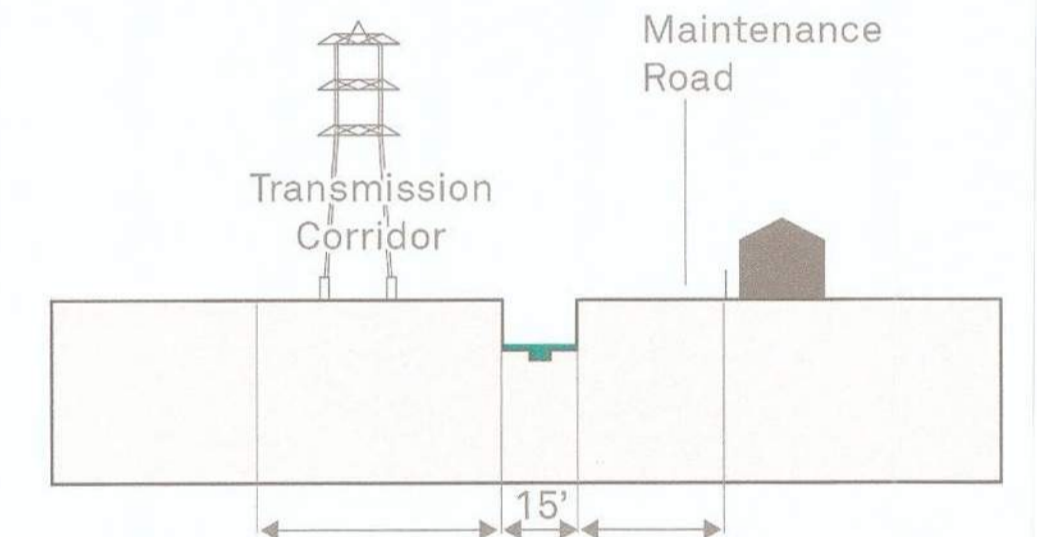
RED text denotes CONSTRAINTS



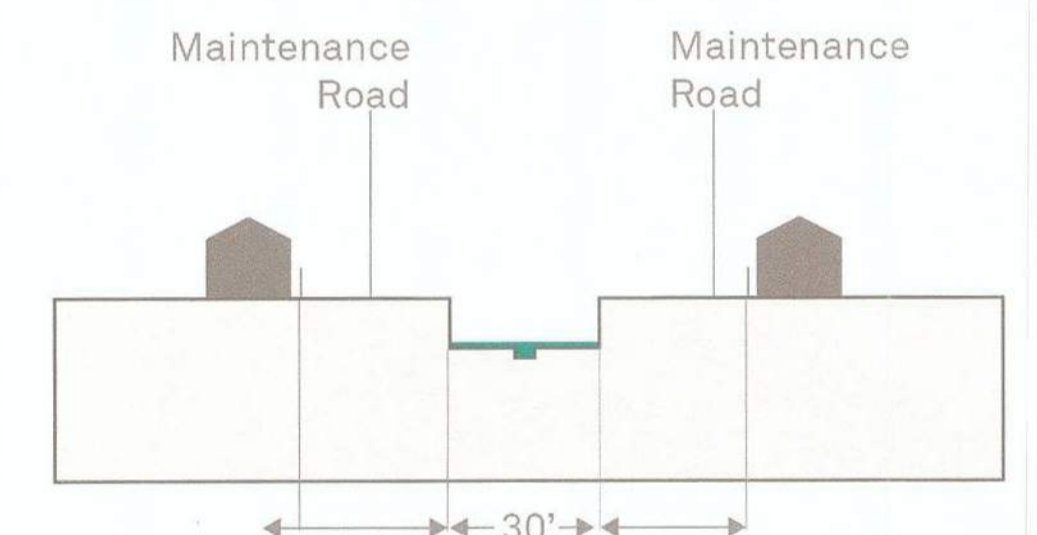
ALISO CANYON WASH CHANNEL CONDITIONS



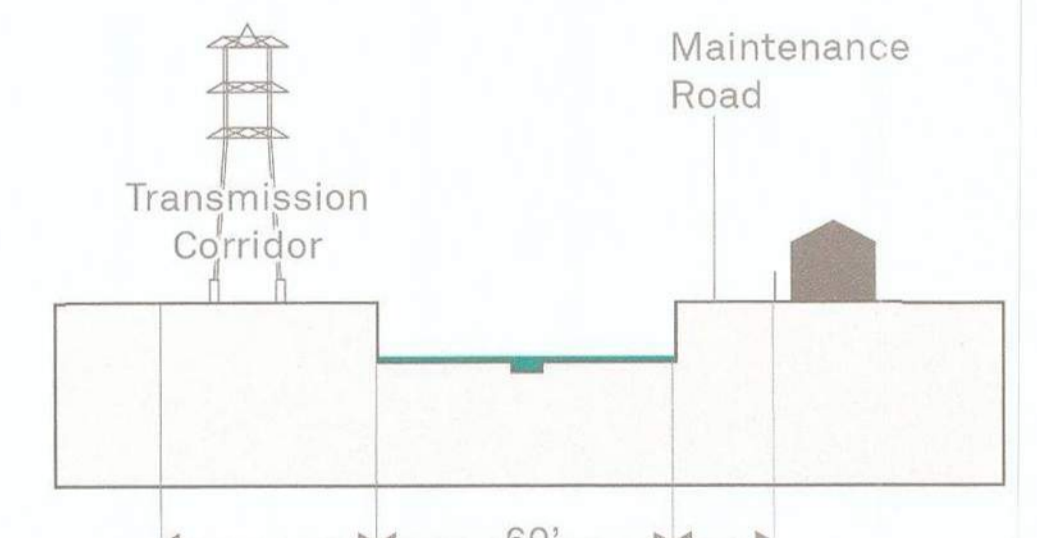
Segment 1.
This segment runs 1.5 miles from San Fernando Valley in the Granada Hills to the 118 Freeway. Here the Aliso Canyon Wash is an un-channelized natural drainage running through Aliso Canyon Park with tract home residential development to its east and west.



Segment 2.
This segment runs 2.7 miles through Northridge residential neighborhoods from the 118 past Wilbur Wash to Plummer Street. Nurseries and wide transmission corridors are typical in this segment.



Segment 3.
This segment runs 0.7 miles through Northridge residential neighborhoods from Plummer Street to the Wilbur Debris Basin.



Segment 4.
This segment runs 3 miles from the Metrolink Northridge station to the confluence of the Aliso Canyon Wash and the LA River. Nurseries and transmission corridors are typical in this section. Single-family residential is the majority of adjacent land use. Cleveland High School and the LA River and Aliso Creek Confluence Park are directly adjacent to the tributary in this segment.