

VERDUGO WASH

Most of Verdugo Wash's course is within the City of Glendale - from the uppermost engineered section just upstream of Dunsmore Avenue and Honolulu Avenue in Crescenta Valley to its confluence with the Los Angeles River. The entire wash is concrete-lined with vertical walls.

The channel is fenced throughout its length. It flows along the edge of the Crescenta Valley County Park, and through the Oakmont Country Club and Glorietta Park, providing visual access to the wash.

POPULATION WITHIN 0.5 MILES¹

- Density: 29 people/acre (LA County Avg: 13)
- Household Income: \$55K (LA County Avg: \$54K)

PARK SPACE + COMMUNITY HEALTH²

- Park Provision: 5.24 acres per 1,000 people (LA County Avg: 3.3 acres per 1,000 people)
- Mixture of small neighborhood parks, natural areas, and sport fields
- Key parks within 0.5 miles include: Griffith Park, Verdugo Mountains Open Space, Verdugo Park, Crescenta Valley Park

PREVIOUS PLANNING EFFORTS

- Confluence with the Los Angeles River has been recognized as an "Opportunity Area" for potential development of recreational opportunities in the City of Los Angeles' Los Angeles River Revitalization Master Plan (LARRMP)
- Restoration of this confluence area also features as part of the Los Angeles River Ecosystem Restoration Integrated Feasibility Report, Alternative 20.

12/10/2018 COMMITTEE MEETINGS COMMENTS

COMMENT SOURCE

- People and Recreation (Committee)
- People and Recreation (Public)
- Water and Environment (Committee)
- Water and Environment (Public)

PUBLIC LANDS

- Park & Open Space
- Schools
- Other Publicly Owned Lands
- Waterway
- Waterway 1/2 Mile Buffer
- City Boundary

ACCESSIBILITY

- Tributary Bike & Pedestrian Path
- Pedestrian Bridge Over Tributary
- Bike Lane
- METRO Bus Route

PROJECTS PUBLIC LANDS

- Complete LADWP Projects
- LA River Revitalization Proposed Projects

DISADVANTAGED COMMUNITIES³ CAL ENVIROSCREEN⁴

- 91-100% (Highest Scores)
- 81-90%
- 71-80%
- 61-70%

¹ 2010 Census/LA County Park Assessment.

² 2010 Census/LA County Park Assessment.

³ Disadvantaged communities are communities designated by CalEPA, pursuant to Senate Bill 535. Disadvantaged communities are identified by census tract and are those that scored at or above the 75th percentile in CalEnviroScreen.

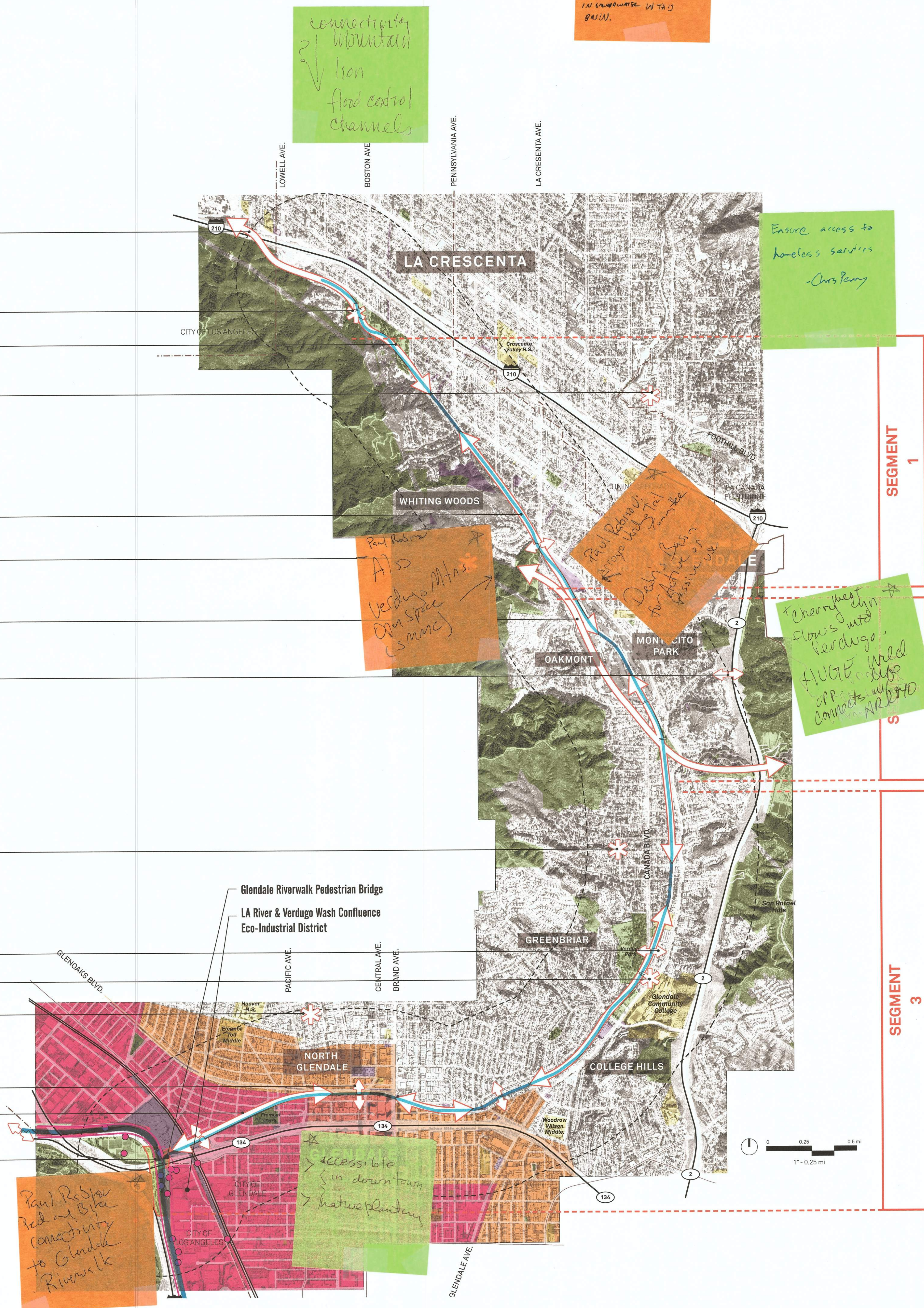
⁴ State of California, CES 3.0. CalEnviroScreen was developed by the Office of Environmental Health Hazard Assessment to identify communities in California most burdened by pollution from multiple sources and most vulnerable to its effects, taking into account socioeconomic characteristics and underlying health status.

BLACK text denotes OPPORTUNITIES

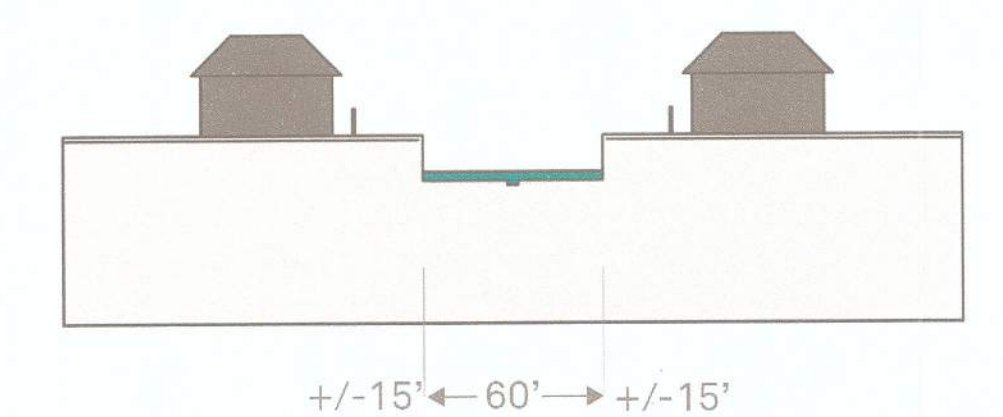
RED text denotes CONSTRAINTS

- Wildlife Connectivity
- Interactive Opportunities with Park
- Trail
- Tributary Opportunity
- Wildlife Access
- Fire Rd Networks as Mnt Biking Bndry Fire Rd Loop
- Wildlife Access
- Wildlife Access

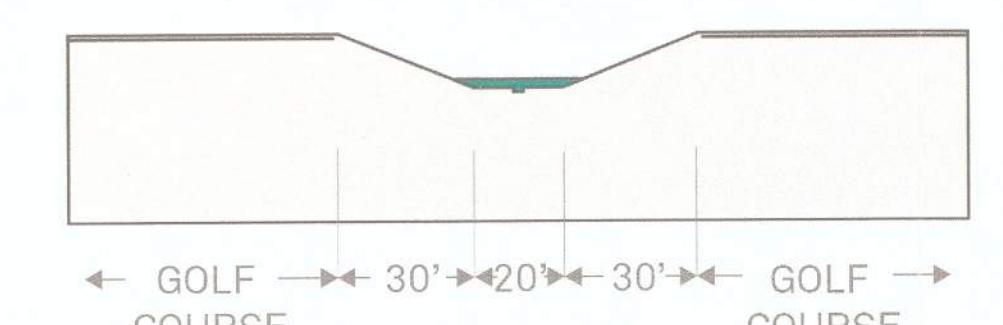
- Cultural
- Bridge
- Eco/Cultural Educational
- Cultural
- Recreation Bridge/Tunnel
- Trail
- Eco District



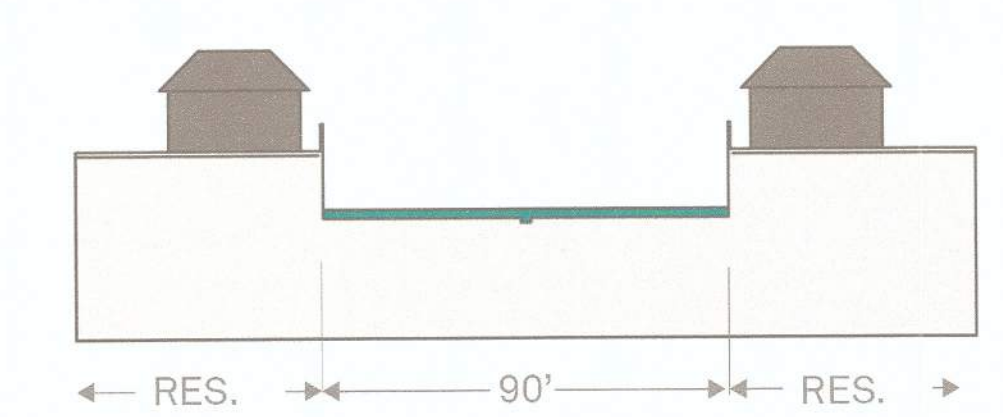
VERDUGO WASH CHANNEL CONDITIONS



Segment 1. This segment runs 2.16 miles through residential and park land uses.



Segment 2. This segment runs 1.37 miles.



Segment 3. This segment runs 4.47 miles through commercial, residential and park spaces.