



AB 466 Upper Los Angeles River and Tributaries Revitalization Plan

Working Group Meeting 3
January 24, 2019

Santa Monica Mountains Conservancy

Meeting Agenda



1. Call to Order.
2. Administration of Oath of Office.
3. Roll Call.
4. Approval of minutes.
5. Comments from Members of the public on items not on the agenda and public testimony on all agenda items.
6. Reports from the Water & Environment and People & Recreation Committees.
7. Interactive map discussion session.
8. Staff Update.

Meeting Agenda (continued)



9. Consideration of resolution adopting the Community Engagement and Outreach Plan.
10. Consideration of resolution recommending that the Mountains Recreation and Conservation Authority Governing Board authorize non-governmental organizations to provide community engagement and outreach services.
11. Consideration of resolution adopting goals and objectives for the revitalization plan.
12. Consideration of resolution adding the Burbank Western Channel to the revitalization plan.
13. Member comments on matters not on the Agenda.
14. Announcement of future meetings and adjournment.



Item 1. Call to Order





Item 2. Administration of Oath of Office





Item 3. Roll Call





Item 4. Approval of Minutes





Item 5. Comments from members of the public on items not on the agenda and public testimony on all agenda items





Item 6. Reports from Water & Environment and People & Recreation Committee





Item 7. Interactive map discussion session



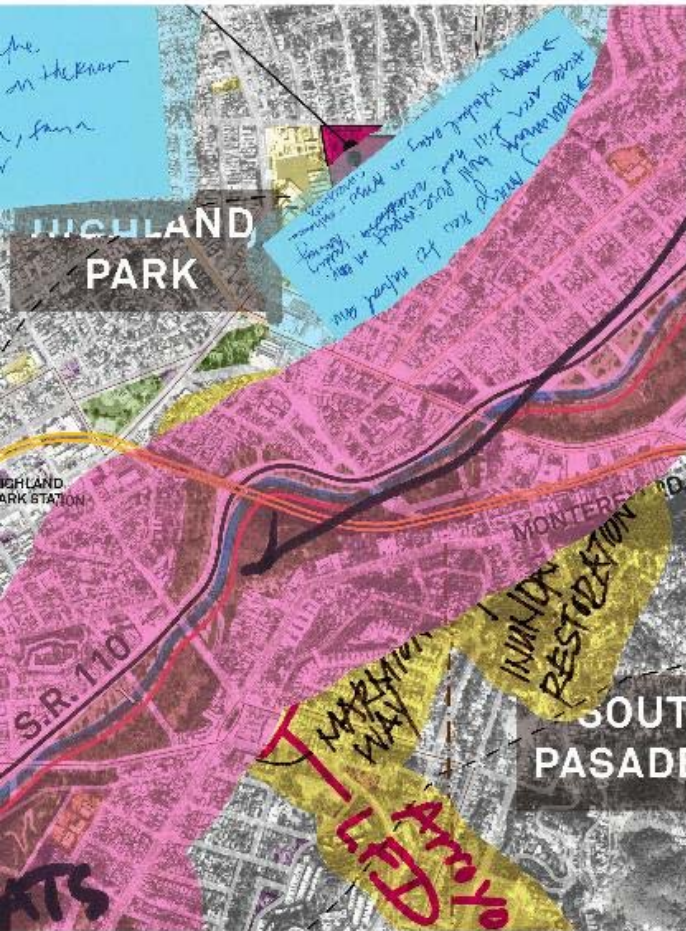
MAP EXERCISE

10 DEC COMMITTEE MEETING

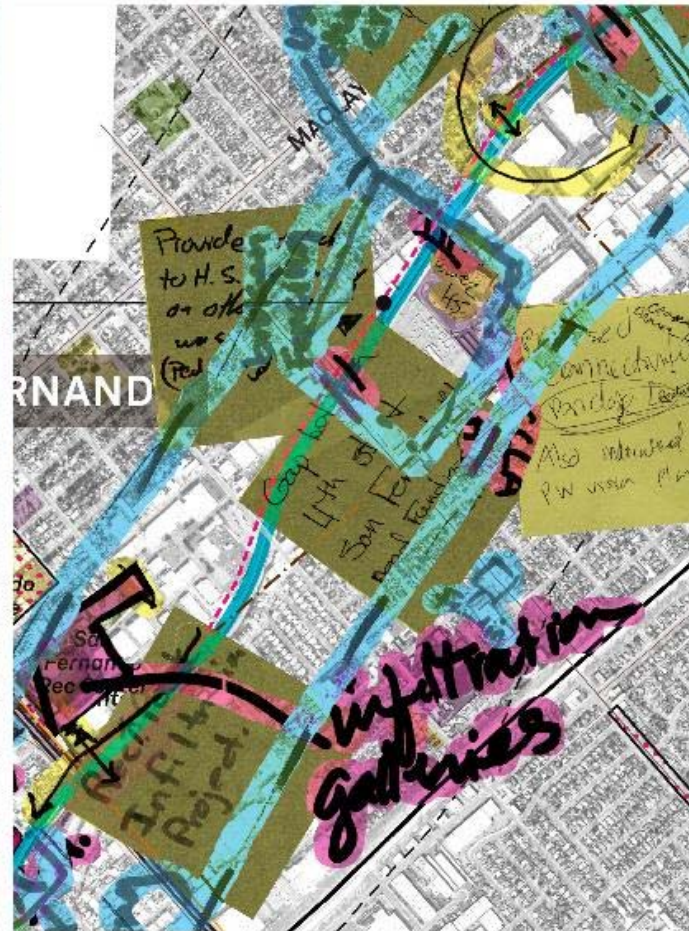


image from December Committee Meetings

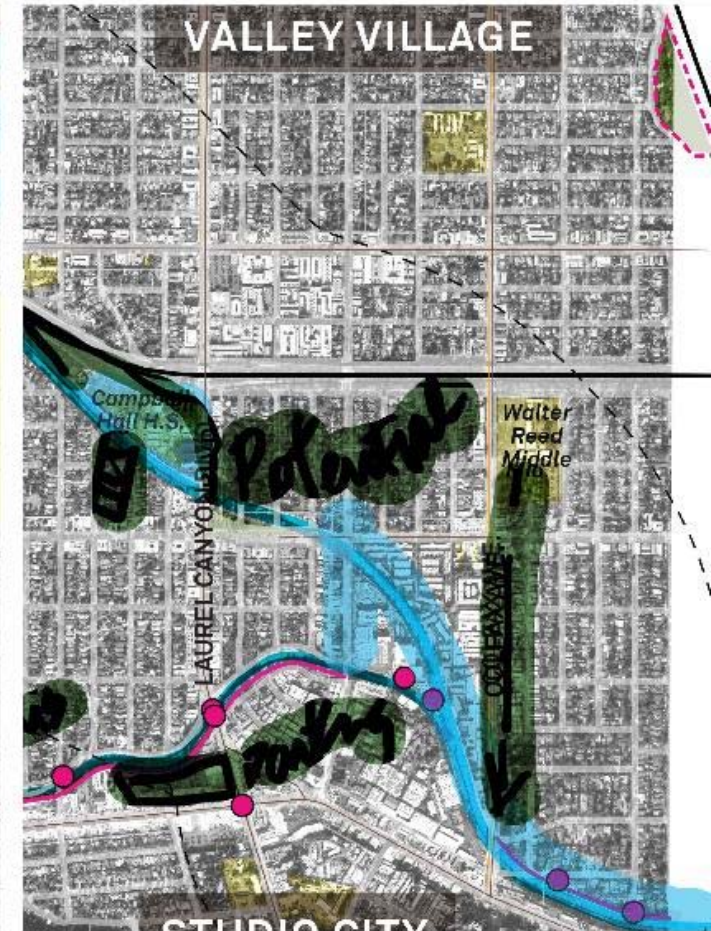
YOUR COMMENTS



Comments on Arroyo Seco



Comments on Pacoima Wash



Comments on Tujunga Wash

YOUR COMMENTS



The LA River as a Riparian Habitat (Arbor Study) of tomorrow

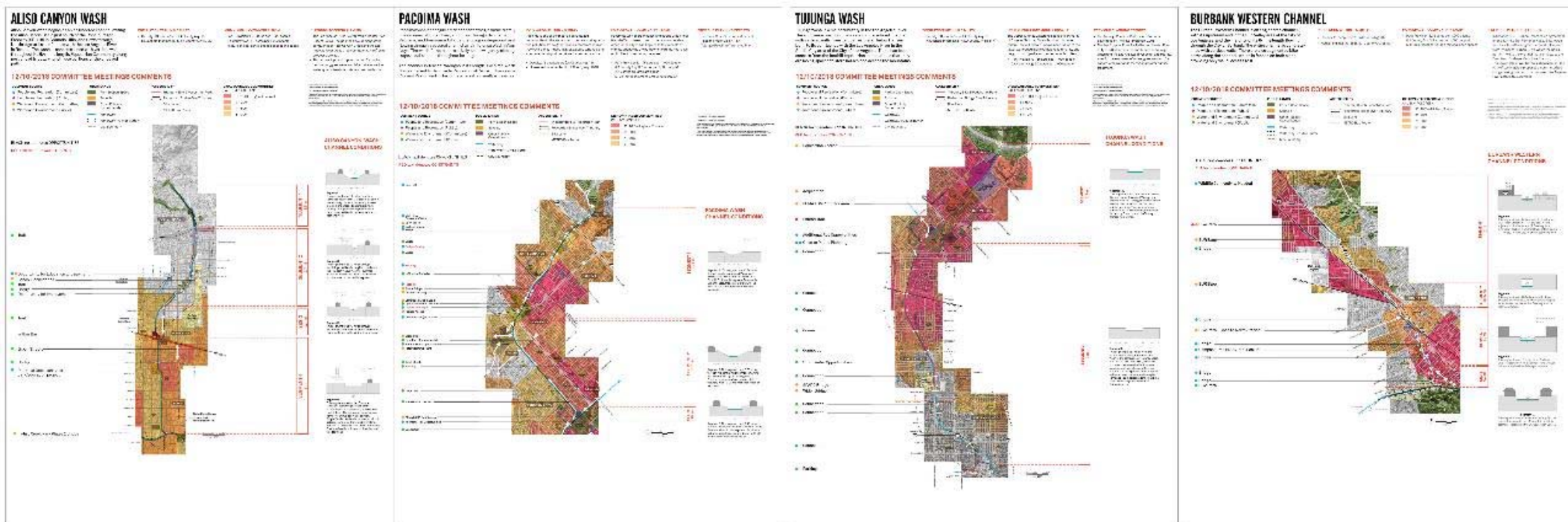


Creating connections at the Verdugo Wash confluence (LARMP)

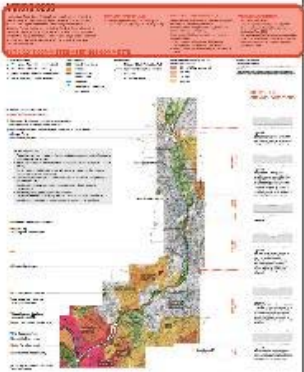


Channel modification that maintains flood control and creates opportunity to access the River (LARMP)

WHAT WE HEARD



KEY FACTS



ARROYO SECO

The Arroyo Seco flows through three subareas. From the headwaters in the San Gabriel Mountains, it flows through the Hahamonga Watershed Park, the gateway to the National Forest to the north. In the Central Arroyo Seco it is adjacent to the Rose Bowl, a natural preservation area and residential neighborhoods. The Lower Arroyo Seco subarea is a cultural heritage landmark and is the most confined area for recreation.

POPULATION WITHIN 0.5 MILES

- Density: 28 people/acre (LA County Avg: 18)
- Household Income: \$46K (LA County Avg: \$54K)

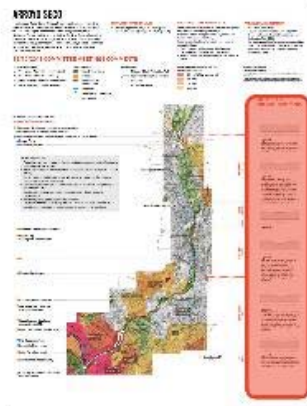
PARK SPACE + COMMUNITY HEALTH

- As early as 1967, the citizens of Pasadena strongly and vocal the land surrounding the Arroyo Seco should become a park for the enjoyment and benefit of the public. The Arroyo Seco has substantial open, active and passive recreational land.
- Park: 19,300 acres per 1,000 people (LA County Avg: 3,000 acres per 1,000 people)
- Most of Arroyo Seco flows through and adjacent to parks.

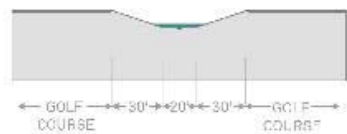
PREVIOUS PLANNING EFFORTS

- Our Arroyo Plan (2019)
- Arroyo Seco Watershed Assessment (2010)
- The Arroyo Seco Watershed Management and Restoration Plan (2006)
- The Los Angeles River Watershed Master Plan (2014) (Los Angeles) from the Los Angeles County Office of the Los Angeles River as an "opportunity area"

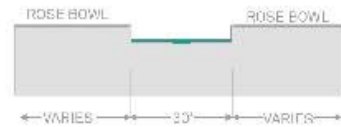
TRIBUTARY MORPHOLOGY



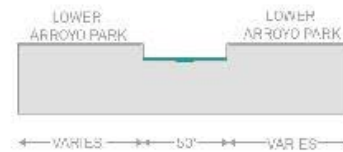
CHANNEL CONDITIONS



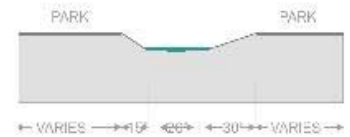
Segment 1.
The Arroyo Seco flows in a natural state above Devil's Gate Dam and is concrete lined the entire length below the dam. In this segment, it runs through parks.



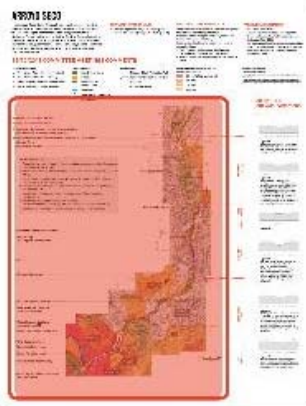
Segment 2.
Segment 1 and 2 have the most developed parkland and the greatest active recreational use. They also have the largest amount of paved parking and the greatest amount of turf due to the Brookside Golf Course. As it flows through the Brookside Golf Course no fencing prevents direct access to the creek is possible. In this segment, it runs through parks and residential.



Segment 3.
The Lower Arroyo is the most confined area for competing recreational uses. This area has culturally significant structures and walls that need preservation and residential neighborhoods in close proximity to natural preservation areas. In this segment, it runs through parks and residential.



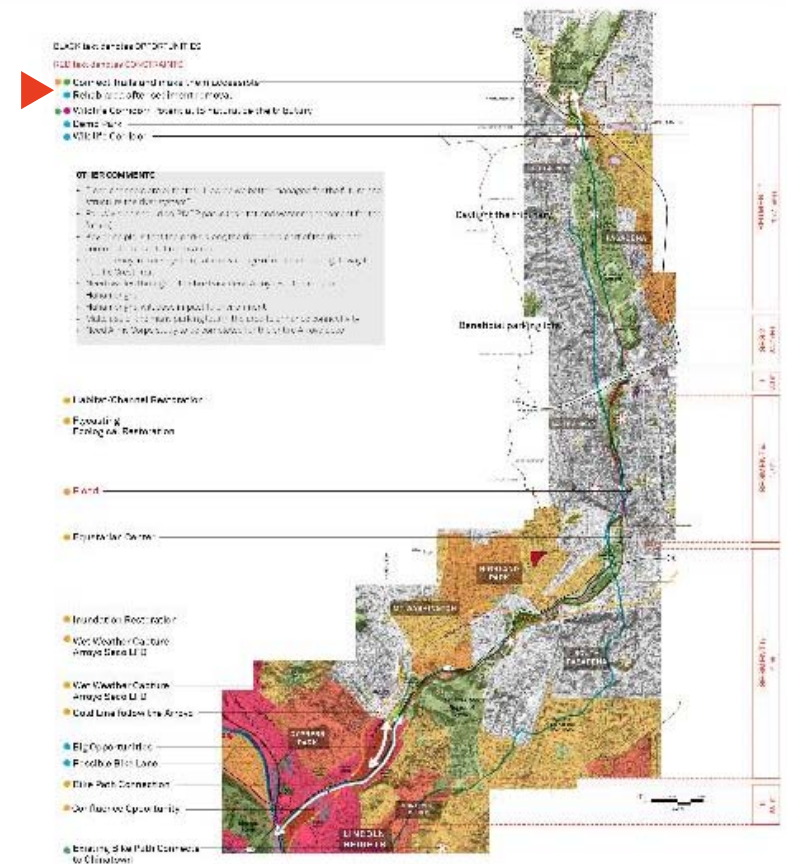
Segment 4.
The concrete wall of the engineered section below the rose bowl configuration in just upstream of the confluence with the Los Angeles River for about 3 miles.



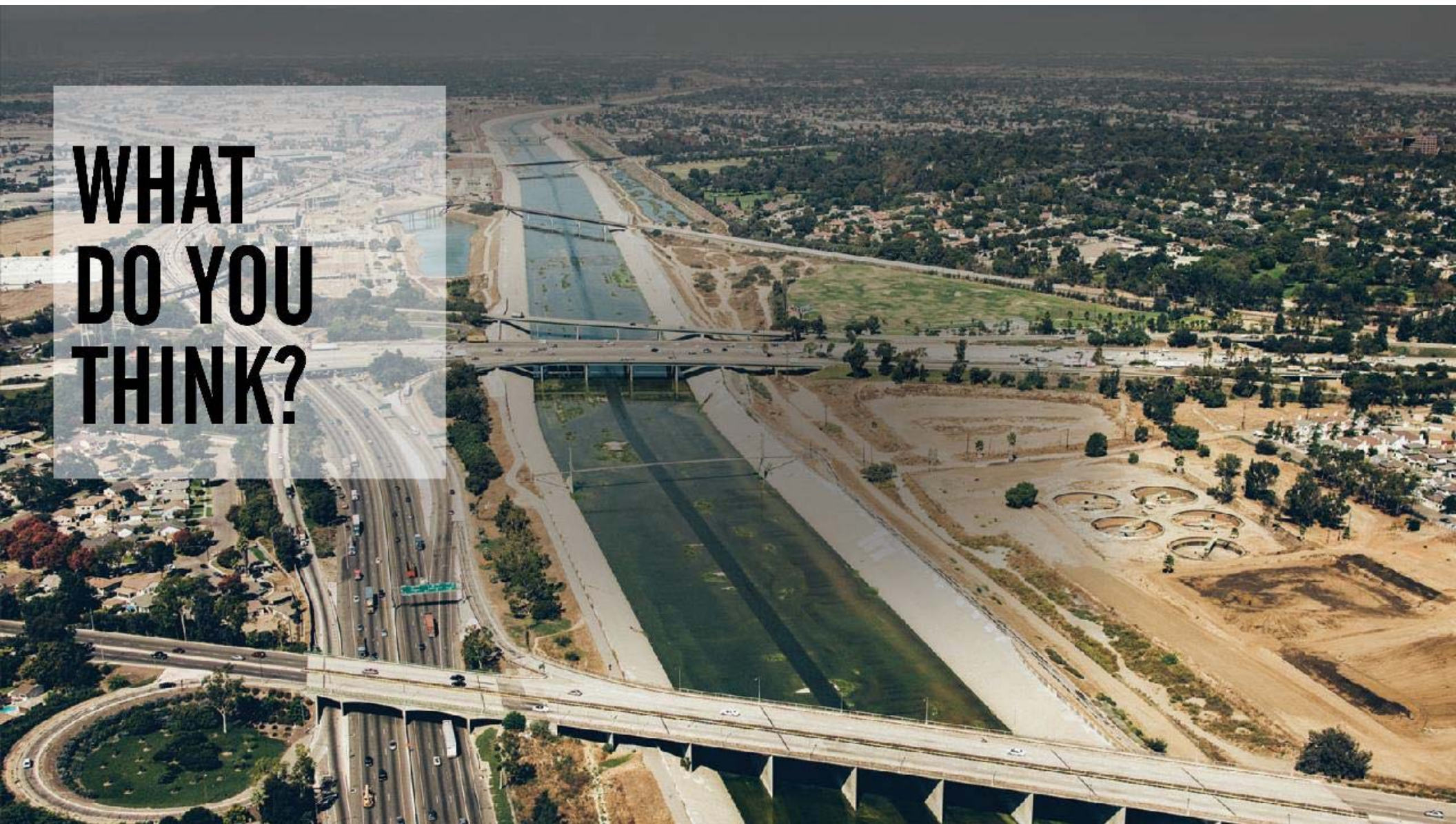
12/10/2018
COMMITTEE MEETING
COMMENTS

COMMENT SOURCE

- People and Recreation (Committee)
- People and Recreation (Public)
- Water and Environment (Committee)
- Water and Environment (Public)



**WHAT
DO YOU
THINK?**





Item 8. Staff Update





Item 9. Consideration of resolution adopting the Community Engagement and Outreach Plan





“...master planning process that includes community engagement and a prioritization of disadvantaged communities...”



Outreach Objectives



Reach diverse communities that have traditionally not been engaged



Create authentic community dialogue by leveraging local networks



Deliver an inclusive, flexible, and tailored approach



Provide opportunities for personal, interactive engagement



Encourage community members to become long-term stewards

Engagement Phases



Methods

- **Community Meetings**
 - 4 – Inventory and Analysis
 - 2 – Concept Development
 - 2 – Plan Preparation
- **Watershed Education**
- **Outreach Toolkit**
- **Survey**
- **Interactive Website**



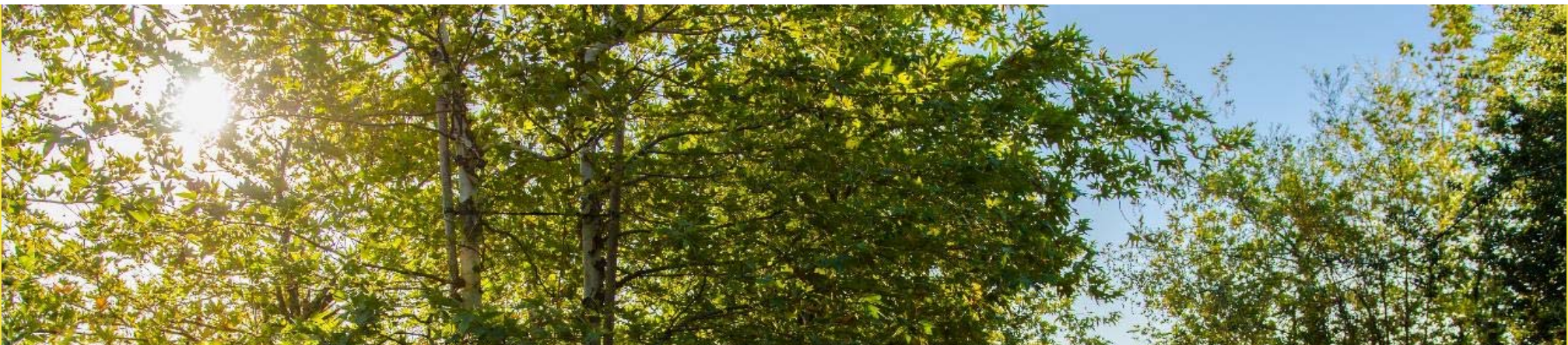


Item 10. Consideration of resolution recommending that the MRCA Governing Board authorize non-governmental organizations to provide community engagement and outreach services



Community Engagement and Outreach NGOs

- Sierra Health Foundation (C/O Sacred Places Institute for Indigenous Peoples)
- William C. Velasquez Institute
- River LA
- The Valley Economic Alliance (C/O The Mulholland Institute)
- The River Project
- Pacoima Beautiful in partnership with Friends of the Los Angeles River



Item 11. Consideration of resolution adopting goals and objectives for the revitalization plan



Revitalization Plan Mission Statement

The mission of the Upper LA River & Tributaries Revitalization Plan is to ~~foster the creation of~~ develop prioritized opportunities with the following components:

- Nature based and watershed management
- Open space
- Multiple benefits
- Safe access
- Alignment with community needs and feedback
- Alignment with funding sources
- Reduction and management of existing flood risks to communities
- Culture, arts, and education
- Reconciliation with previous efforts

Revitalization Plan Goals and Objectives

The mission of the Upper LA River & Tributaries Revitalization Plan is to foster the creation of prioritized opportunities to:

- Focus on community engagement especially in underserved communities with an emphasis on environmental justice
- Focus on Tributary **areas** where there is not already planning or project building efforts; especially those that are neglected shall be prioritized- although all tributaries in study area shall be accounted for.
- Refer to previous planning efforts whenever possible and fill in gaps, **identify and resolve inconsistencies**

People and Recreation: Purpose

The purpose of the People and Recreation Committee is to identify and prioritize opportunities that focus on the community need for public space and recreation within and along the Upper Los Angeles River and its Tributaries. Opportunities should include special consideration for:

- Culture and arts
- The special needs community
- Economic and workforce development opportunities
- Recreation and equitable access for all
- Integration of the water and environment
- Safety and access

People and Recreation: Goals and Objectives

- Feature and promote the importance of the community **and** local culture ~~and local businesses~~
- ~~Identify and~~ create improved, **inspirational**, ~~while promoting an emphasis on community and open space inclusive~~, access and connectivity to public space, the river and tributaries for **all users**
- **Incorporate and** Identify opportunities for **education**, **recreation**, ecosystem and habitat restoration, passive recreation, and examine their relationship with baseflows
- Provide connectivity to **safe** parks, open spaces, and trails
- Focus on social equity and environmental justice during the planning process
- ~~Coordinate with~~ **Strengthen local businesses and vendors to foster job creation and economic growth**

Water and Environment Committee: Purpose

The purpose of the Water and Environment committee is to identify and prioritize the opportunities that focus on the community need for safety and responsibility for a sustainable environment for the Upper Los Angeles River and its tributaries using an integrated approach (water resources/conservation/quality/recreation source).

Water and Environment Committee: Goals and Objectives

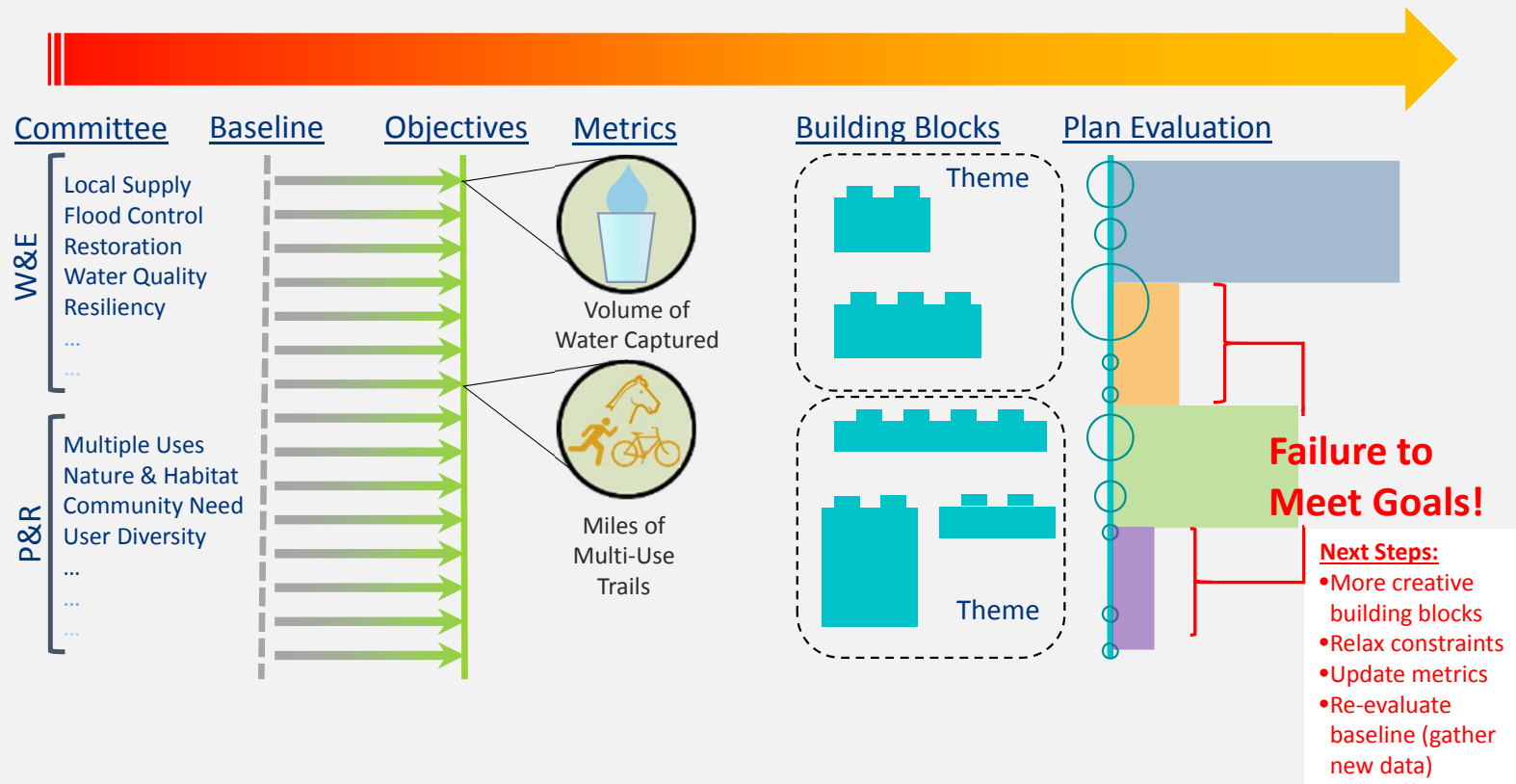
- Create **equitable** opportunities to enhance the ecosystem, watershed health, **water supply**, improve **water quality** and watershed health
- Maintain or enhance flood management
- Balance the utilization of available space and resources for both the environment and the community
- Assess all opportunities for resiliency **to climate change**



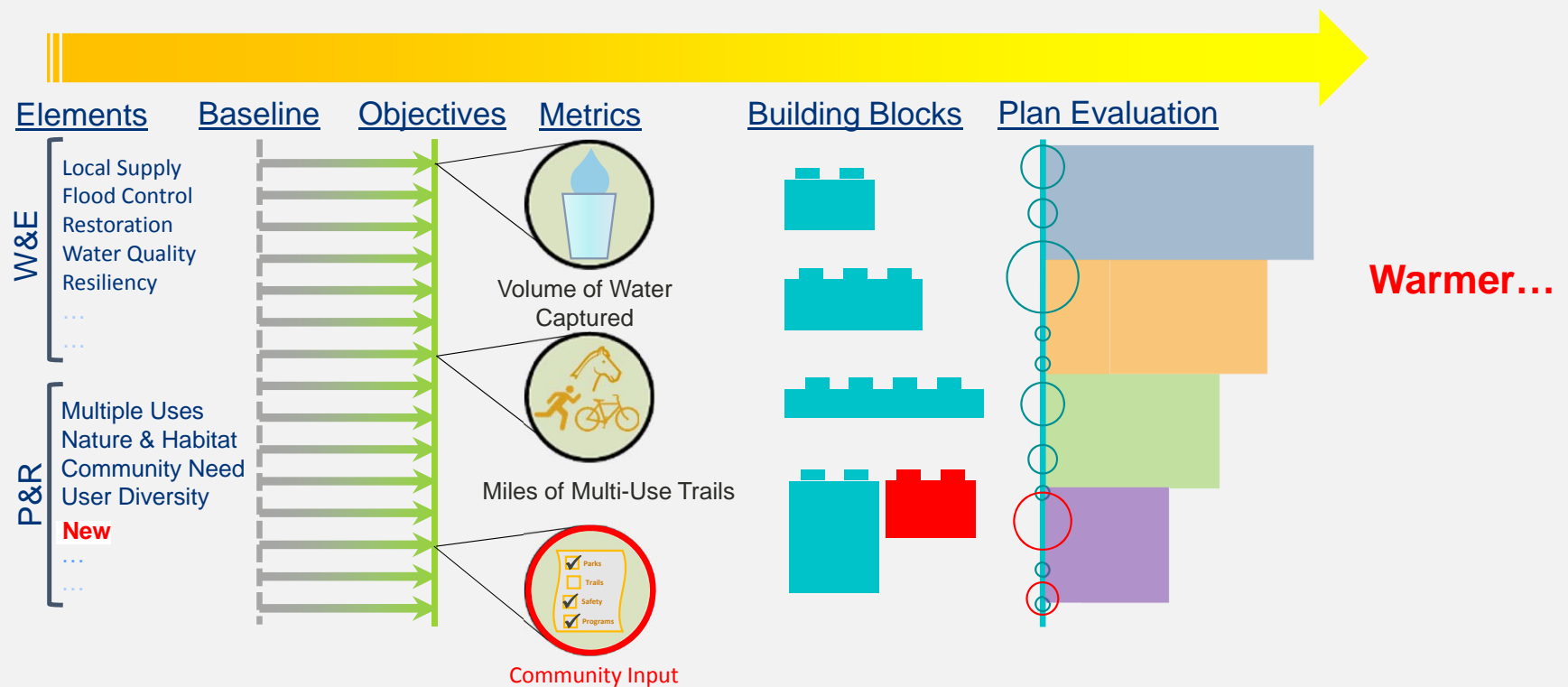
Framework Presentation



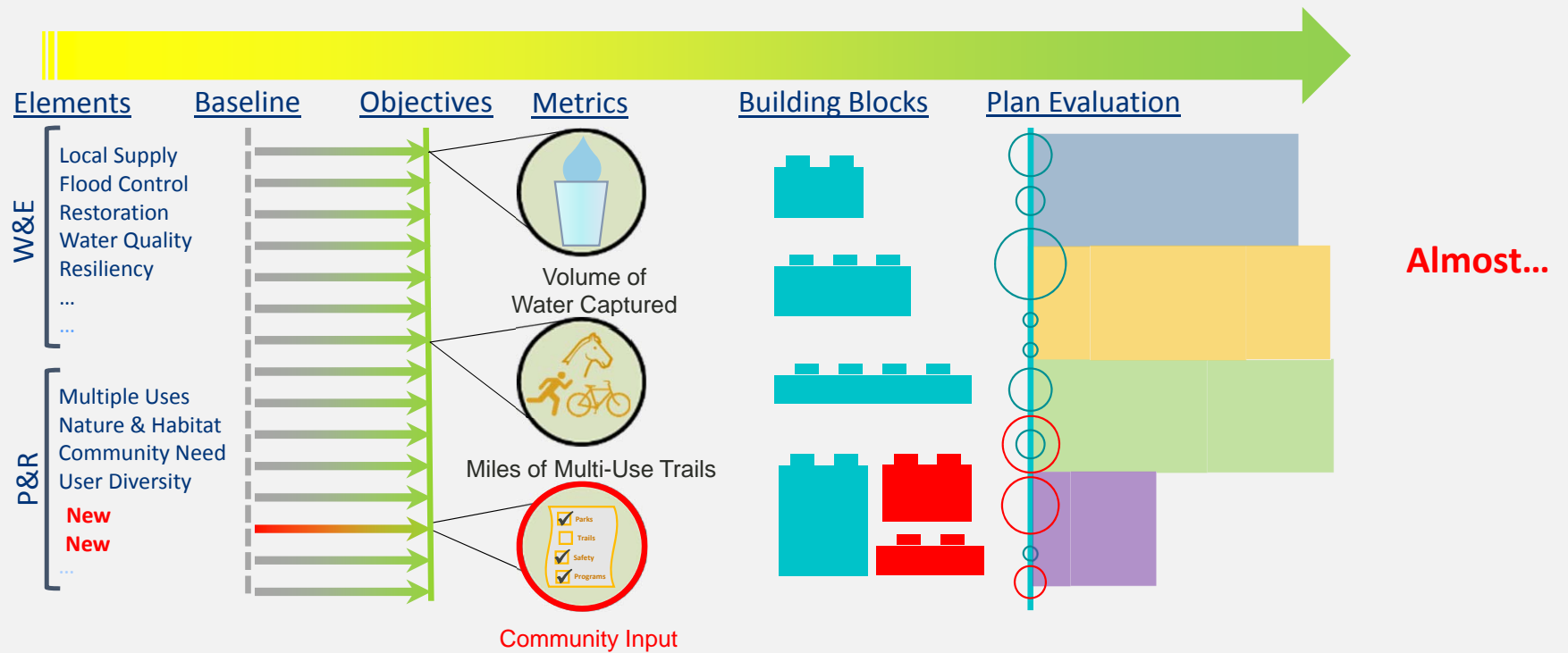
Framework Concept Outline



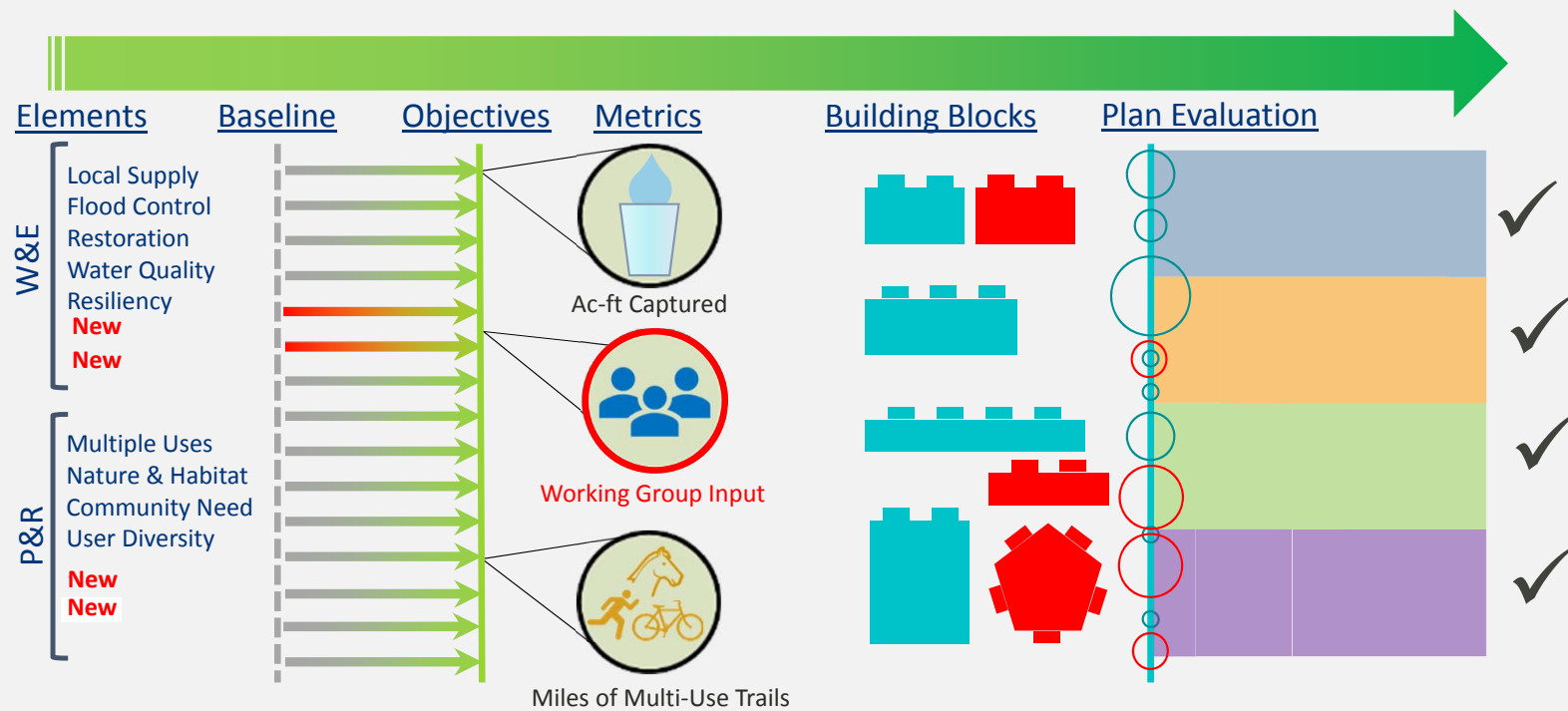
Incorporation of Initial Community Input



Second Round of Community Input



Working Group Input



Revitalization Plan **Process** Timeline

Working Group Meeting Date	OBJECTIVE
January 2019	Develop Program Goals and Prioritization Framework
March 2019	Identify Priority sites and Opportunities
May 2019	Project Concept Development
July 2019	Develop ULART Revitalization Plan
September 2019	Vote on ULART Revitalization Plan

Revitalization Plan Development Timeline

2018

2019

YOU
ARE
HERE

**Inventory
and Analysis**

**Initial
Opportunity
Sites**

**Draft
Framework**

**Constraints
Analysis**

**Concept
Development**

**Revitalization
Plan**

Community Engagement Plan

Community Outreach



Item 12. Consideration of resolution adding the Burbank Western Channel to the revitalization plan



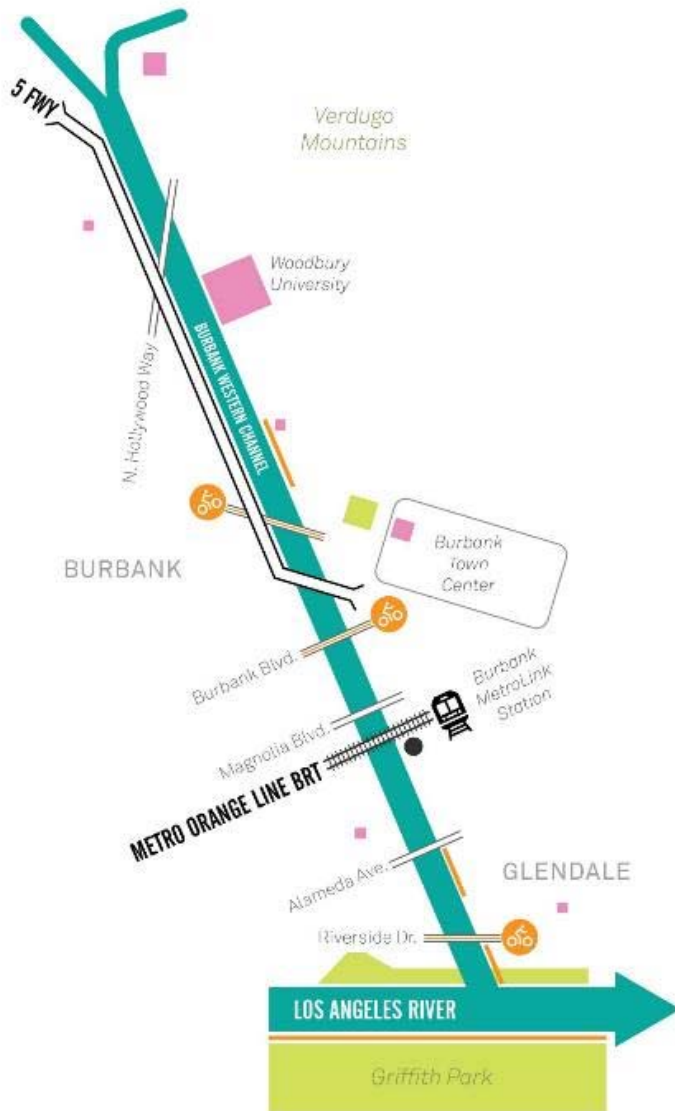
	Tujunga Wash	Pacoima Wash	Burbank Western Channel	Aliso Canyon Wash	Browns Canyon Wash	Arroyo Seco	Verdugo Wash	Caballero Creek	Arroyo Calabasas	Bull Creek	Central Branch Tujunga	Bell Creek	Chatsworth Creek	
PEOPLE & RECREATION	A. Park Accessibility* <small>%People within 1/2 mile of a park Source: 2010 Census Data/LA County Park Assessment</small>	5 (80%)	5 (80%)	4 (85%)	8 (70%)	10 (54%)	2 (91%)	1 (97%)	12 (50%)	7 (75%)	10 (54%)	9 (65%)	13 (40%)	3 (87%)
	B. Park Provision* <small>acres of park space per 1,000 people Source: 2010 Census Data/LA County Park Assessment</small>	11 (1.65)	12 (1.45)	6 (3.76)	9 (1.91)	1 (13)	3 (9.36)	5 (5.24)	10 (1.87)	13 (1.44)	4 (5.63)	8 (3.01)	7 (3.53)	2 (11.5)
	C. Population Density* <small>people per acre Source: 2010 US Census</small>	13 (38)	4 (18)	10 (26)	6 (19)	9 (25)	8 (23)	11 (29)	12 (36)	2 (17)	1 (15)	2 (17)	7 (21)	4 (18)
	D. Vacant Land* <small>% of total Source: LA County GIS Portal</small>	9 (6.1%)	8 (5.9%)	4 (3.5%)	7 (5.7%)	6 (5.6%)	10 (6.5%)	11 (9.1%)	12 (14.2%)	13 (16.9)	3 (1.4%)	2 (1.3%)	5 (3.7%)	1(1%)
BOTH	E. Household Income* <small>\$ Source: 2010 US Census</small>	10 (\$51K)	12 (\$46K)	10 (\$51K)	6 (\$58K)	5 (\$60K)	12 (\$46K)	8 (\$55K)	6 (\$58K)	3 (\$80K)	4 (\$74K)	9 (\$52K)	2 (\$81K)	1 (82K)
	F. Community Burden (CES 3.0)* <small>State percentile range Source: State of California, CES 3.0</small>	12 (70)	13 (76)	11 (69)	8 (60)	7 (59)	9 (62)	5 (51)	3 (47)	4 (48)	6 (58)	10 (66)	1 (41)	2 (42)
HYDROLOGY & ENVIRONMENT	G. Impervious Land Cover <small>% total land cover Source: National Landcover Data Base, Model</small>	9 (49%)	11 (53%)	12 (57%)	8 (42%)	10 (52%)	2 (34%)	5 (39%)	4 (38%)	2 (34%)	6 (40%)	12 (57%)	7(41%)	1 (33%)
	H. Tributary Length <small>miles Source: USGS National Hydrography Dataset</small>	12 (9.8)	13 (11)	6 (6.3)	9 (8.5)	5 (5.9)	11 (9.7)	8 (8.3)	2 (3.3)	6 (6.3)	10 (9.3)	4 (4.2)	3 (3.7)	1 (2.3)
	I. Tributary Drainage Area <small>acres Source: LA County GIS Portal</small>	13(1,111K)	12 (38.7K)	9 (18.5K)	7 (13.6K)	8 (14K)	11 (30.2K)	10 (19.4K)	1 (2.4K)	5 (9.2K)	6 (12.8K)	2 (5.3K)	4 (8K)	3 (6.3K)
	J. Significant Ecological Area <small>acres Source: LA County GIS Portal</small>	8 (13.9K)	5 (8.4K)	8 (13.9K)	11 (26K)	12 (26.9K)	4 (8.2K)	7 (11.3K)	6 (11K)	10 (19.5K)	13 (35K)	1 (0)	2 (1.3K)	3 (3.6K)
TOTAL SCORE		102	95	80	79	73	72	71	68	65	63	59	51	21

Version 2

* within 0.5 miles of the tributary

Note: The primary flows in the Burbank Western Channel are reclaimed imported water to be programmed for use.





BURBANK WESTERN CHANNEL

Community Burden¹: Most Burdened 31% of State

Park Provision²: 3.76 acres per 1,000 people
(LA County Avg: 3.3 acres per 1,000 people)

Typical Condition:

- 3 typical conditions
- Adjacent to the I-5 for most of its length
- Intermittent service roads along Tributary (10-30' wide)

Key Open Spaces:

- Equestrian Center
- Segmented bike path along the Tributary

¹ State of California, CES 3.0

² 2010 Census/LA County Park Assessment

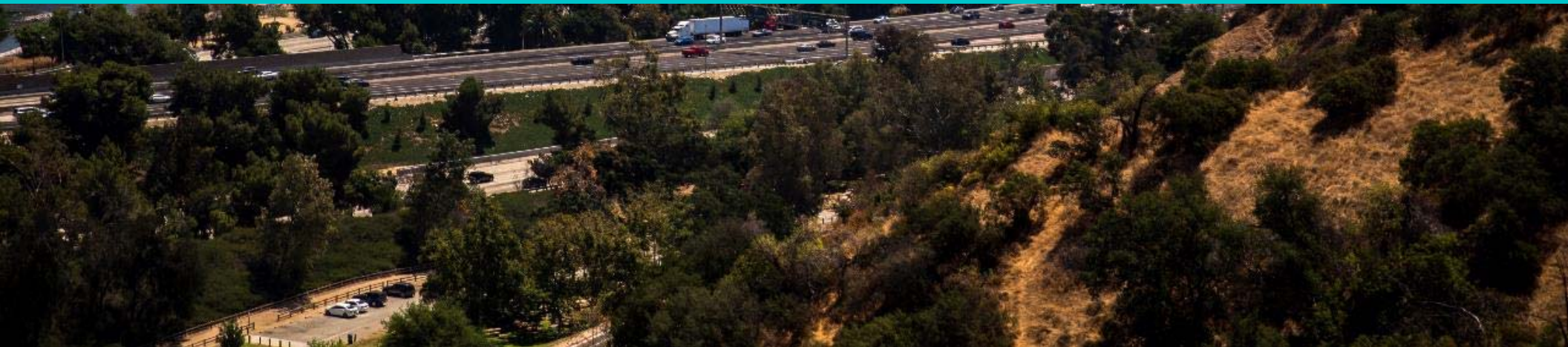


Item 13. Member comments on matters not on the agenda





Item 14. Announcement of Future Meetings and Adjournment



Revitalization Plan Upcoming Events

Working Group		Water & Environment and People & Recreation Committees	
March 28, 2019		February 28, 2019	
May 23, 2019		April 25, 2019	
July 25, 2019		June 27, 2019	
September 26, 2019		August, 2019 (Draft plan review, no meeting)	
Community Engagement and Outreach			
NGOs perform outreach for Round 1 Community Meeting attendance		February 2019	
Round 1 Community Meetings		March 2019 (exact dates TBD)	



Contact Information

Santa Monica Mountains Conservancy, Board Secretary

- Tel. No. (310) 589-3200, Extension 118
- Email: river@smmc.ca.gov

Mountains Recreation and Conservation Authority

Sarah Rascon, Urban River Program Officer

Email: sarah.rascon@mrca.ca.gov

- Tel. No. (323) 221-9944, Extension 109

Melissa Vega, Project Analyst

- Email: melissa.vega@mrca.ca.gov
- Tel. No. (323) 221-9944, Extension 199



AB 466 Upper Los Angeles River and Tributaries Revitalization Plan

Working Group Meeting 3
January 24, 2019

Santa Monica Mountains Conservancy